



# ***QA16***

# ***Addressable System***

---

Programming Manual V3.07.3

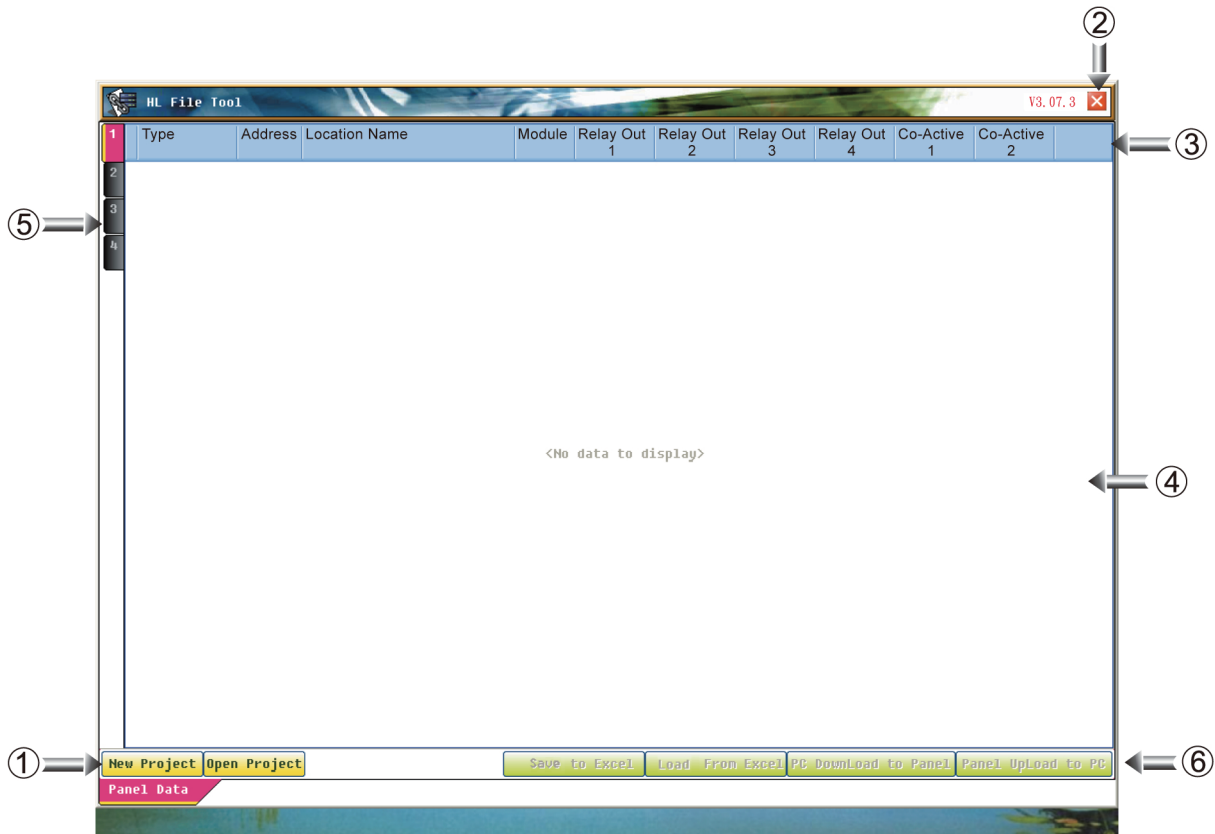
HORING LIH INDUSTRIAL CO., LTD.

[www.horinglih.com](http://www.horinglih.com)

# QA16 Addressable Panel Programming Manual V3.07.3

## 1. User Reference Instruction

Click HL Fire Tool v3.07.3 to start the initial screen



### ① Project Options

At the bottom left of the screen. Start new project file or open old project file. Please refer to details on Page 2.

### ② Close HL Fire Tool v3.07.3

Closing HL Fire Tool chooses save as, save or exit.

### ③ Data Enter Options

Choose column that you need to enter the data.

### ④ Data Enter

Enter all necessary data here.

### ⑤ Data Bank Number


Each data block has 8 loops at the most.

### ⑥ Send File

Save, load, download or upload the files.

## 2. New Project / Open Project Instruction

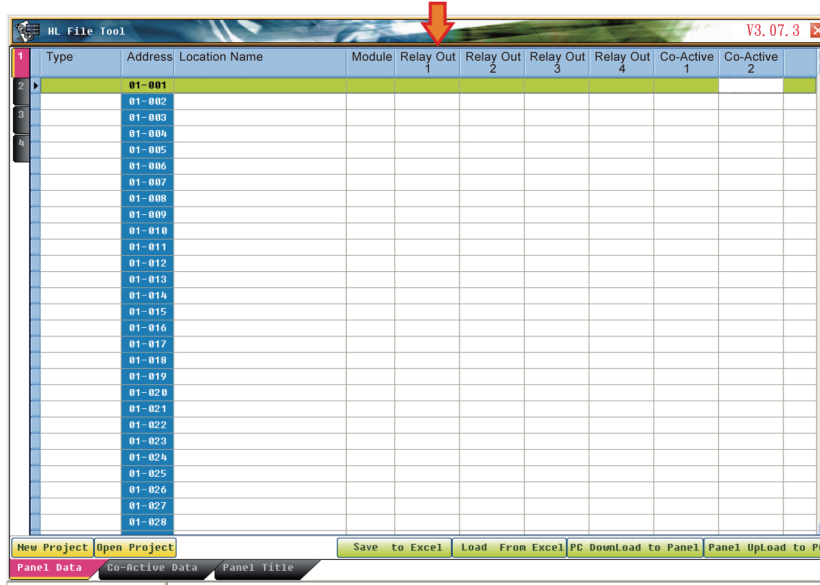
### New Project

Click New Project  to start a new file. Type name for this file and then you may enter the information.

New Project : Project File Name :

TEXT

Create Cancel



### Open Project

Click Open Project  to open project file and then choose the file you want to open.

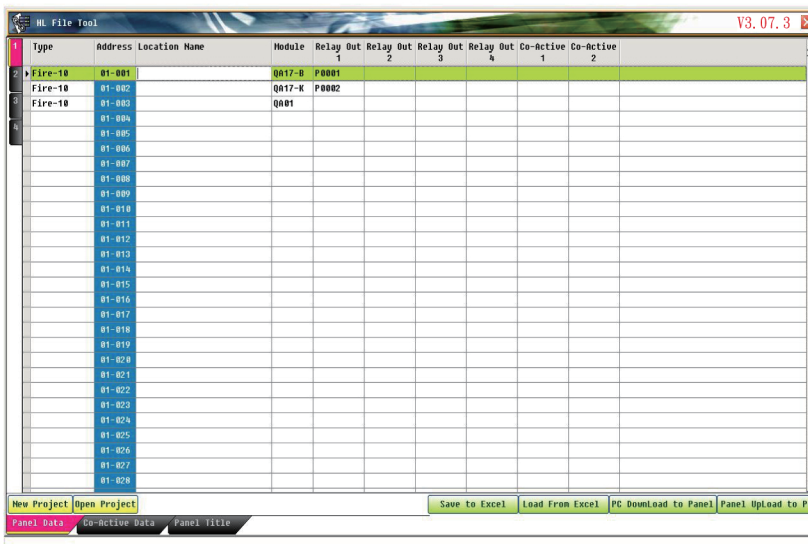
Open Project, Project File Name:

C:\Project\TEXT.ABS

Open Cancel



Choose the file you want to open



### 3. Programming Instruction

(1) After opening the file, choose which column you want to enter information into : Type, Address, Location Name, Module, Relay Out and Co-Active.

(G)	(A)	(B)	(C)	(D)	(E)	(F)				
1	Type	Address	Location Name	Module	Relay Out 1	Relay Out 2	Relay Out 3	Relay Out 4	Co-Active 1	Co-Active 2
2	Fire-10	01-001	Lobby	QA17-B	P0001	P0002	P0003	P0004	E0001	E0002
3	W-11	01-002	Room 201	QA17-K	P0005	P0006	P0007	P0008	E0009	E0014
4	V-12	01-003	2nd Floor Hallway	QA01						
	V-13	01-004								
	GAS-16	01-005								

A. Type: Enter 2 numbers. The first number (1) means Fire LED . The second number (0~6) is the type of fire fighting system.



Types of Fire Fighting Systems :

0: Fire alarm 1: Fire sprinkler 2: Smoke evacuation (with alarm delay)

3: Smoke evacuation (no alarm delay) 5: Monitor 6: GAS

For example: Fire alarm:10

B. Address: The number is produced automatically.

C. Location Name: It can show 24 letters including spaces. The name could be shown on the LCD and be printed.

D. Module: Select from 7 modules: QA01,QA05,QA06,QA17-B,QA17-K,QA19 and QA0817

QA01: Addressable Smoke Detector

QA05: Addressable Combination Smoke & Heat Detector

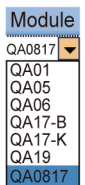
QA06: Addressable Heat Detector

QA19: Addressable Manual Call Point

QA0817:Addressable Manual Call Point

QA17-B: Control Module

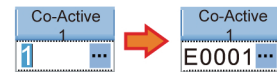
QA17-K: Monitor Module



E. Relay Out: This addressable panel has a maximum of 560 relay output points, P0001~P0560. Enter the Relay Output Point number.

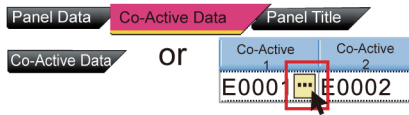


F. Co-Active: There are 2 sets of Co-Active links. Each one can activate 60 other points. This addressable system can co-activate 2030 points at the most.



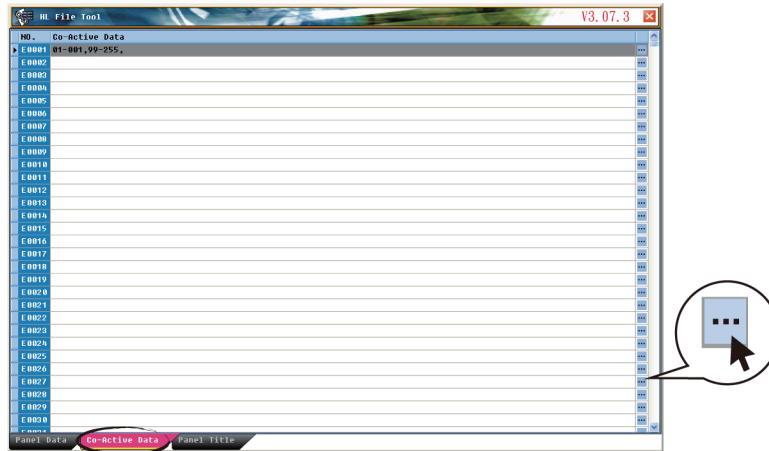
G. Data Bank: Each data block has 8 loops, so this addressable system has a maximum of 32 loops. Data Bank No.1: Loop 01 ~08. No.2 : Loop 09 ~16. No.3 : Loop 17 ~24. No.4 : Loop 25 ~32.


(2) Co-Active Instructions  
You may either click the screen.



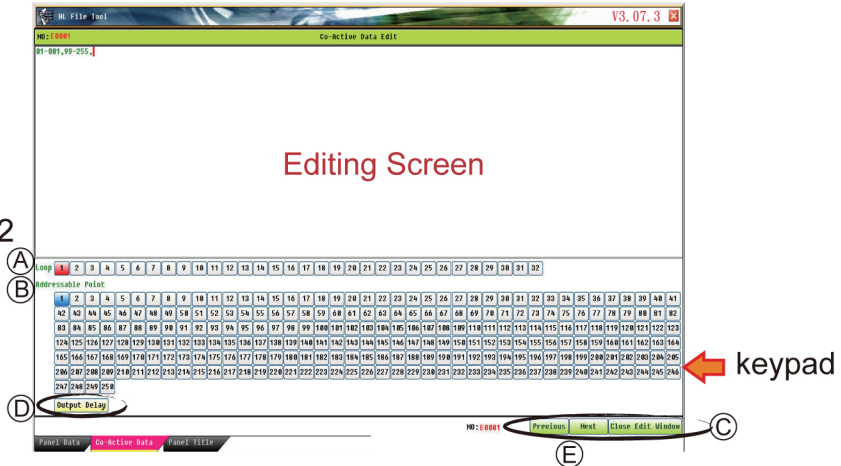
to enter the Co-Active

>> Picture 1





Please click  as in picture 1 or click the number of the co-active point twice to enter the edit screen as in picture 2.



>> Picture 2




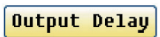

Editing:

A. Loop Number: Click the keypad to choose the loop number. The chosen loop will become red. 

B. Addressable Point Number: Click the keypad to choose the addressable point number. The chosen addressable point will become blue. 

Click  on the Editing Screen or the same number in the keypad again to cancel it. The color will turn to white. 

C. Save Files: Click  to save your files. You will return to the previous screen automatically.

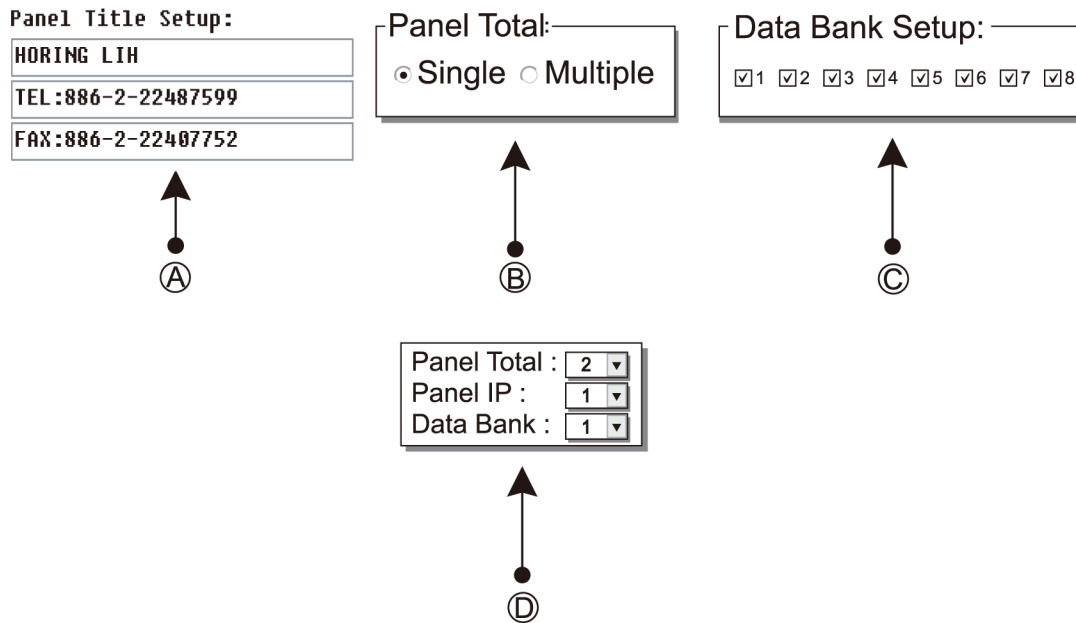
D. Output Delay: Click  to delay the addressable points. The number 99-255 will be produced. Then choose loop and addressable point number as in point A and B above. Use  to cancel the loop, addressable point and output delay numbers. For example: 99-255,01-012 means loop 1 addressable point 12 is delayed.

E. You may also use  and  to choose the co-active number, E0001~E2030.

### (3) Panel Title Edit



Click the **Panel Title** to edit panel title.



- (A) Panel Title Setup: each box can show 24 letters, figures, or punctuation marks.
- (B) Panel Total: Select the panel status; single or multiple.  
Single: Select the loop number to enable the loop in Data Bank Setup.  
If multiple is selected then go to D.
- (C) Data Bank Setup: Select the loop number used in this panel.
- (D) Panel Total: Select total networking panel number(2-31).  
Panel IP: The ordinal number of the panel to set up(1-31).  
Data Bank: 4 Data Banks and each data bank has 8 loops. Select Data Bank: 1, it shows 1-8 loop in Data Bank Setup; select Data Bank :2, it shows 9-16 loop in Data Bank Setup.

For example: 3 networking addressable panels and each panel is 4 loops.

**To set up the first panel:**

Panel Total : 3

Panel IP : 1

Data Bank : 1

Data Bank Setup: Select 1, 2, 3, and 4.

Panel Total :	<input type="text" value="3"/>
Panel IP :	<input type="text" value="1"/>
Data Bank :	<input type="text" value="1"/>

Data Bank Setup:
<input checked="" type="checkbox"/> 1 <input checked="" type="checkbox"/> 2 <input checked="" type="checkbox"/> 3 <input checked="" type="checkbox"/> 4 <input type="checkbox"/> 5 <input type="checkbox"/> 6 <input type="checkbox"/> 7 <input type="checkbox"/> 8

**For the second panel:**

Panel Total : 3

Panel IP : 2

Data Bank : 1

Data Bank Setup: Select 5, 6, 7, and 8.

Panel Total :	<input type="text" value="3"/>
Panel IP :	<input type="text" value="2"/>
Data Bank :	<input type="text" value="1"/>

Data Bank Setup:
<input type="checkbox"/> 1 <input type="checkbox"/> 2 <input type="checkbox"/> 3 <input type="checkbox"/> 4 <input checked="" type="checkbox"/> 5 <input checked="" type="checkbox"/> 6 <input checked="" type="checkbox"/> 7 <input checked="" type="checkbox"/> 8

**For the third panel:**

Panel Total : 3

Panel IP : 3

Data Bank : 2

Data Bank Setup: Select 9, 10, 11, and 12.

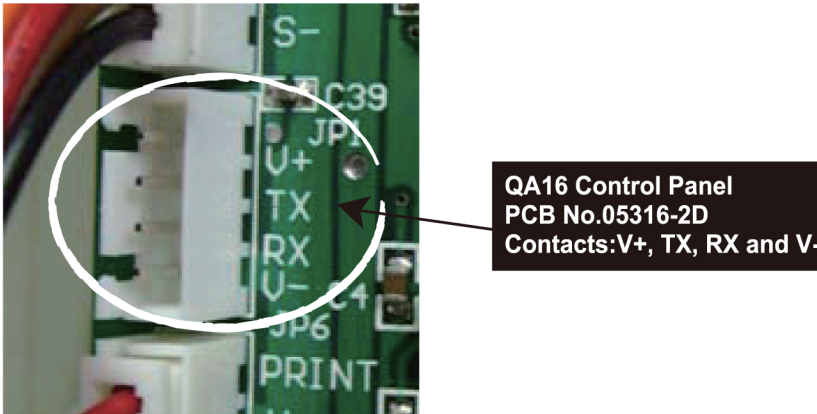
Panel Total :	<input type="text" value="3"/>
Panel IP :	<input type="text" value="3"/>
Data Bank :	<input type="text" value="2"/>

Data Bank Setup:
<input checked="" type="checkbox"/> 9 <input checked="" type="checkbox"/> 10 <input checked="" type="checkbox"/> 11 <input checked="" type="checkbox"/> 12 <input type="checkbox"/> 13 <input type="checkbox"/> 14 <input type="checkbox"/> 15 <input type="checkbox"/> 16

#### (4) Download and Upload

Data is downloaded and uploaded between the PC and control panel using a bridge cable connection.

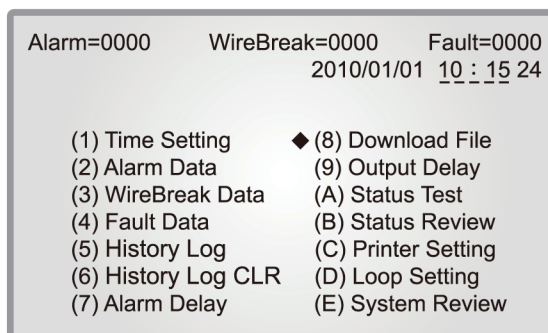
Connect QA16 control panel's "V+, TX, RX and V-" of PCB No.05316-2D to PC's RS232 port.



© **PC Download to Panel:** Download the data from PC to panel  
 Note: Make sure the PC and control panel are turned on.

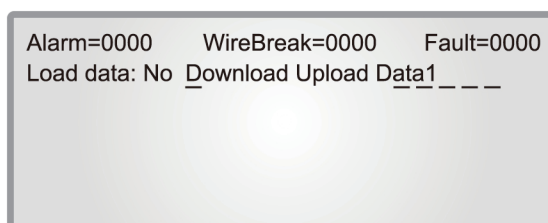
##### 1. Set the panel

First, enter the Function Selection List Screen.



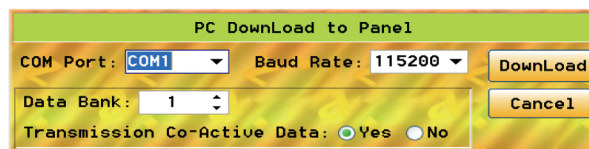
Choose (8) and then press ENTER to enter the screen below.

Choose "Download" at the Load data: prompt by moving the cursor to the right, and selecting the Data Bank Number. The screen will display "Loading".



##### 2. Set the PC

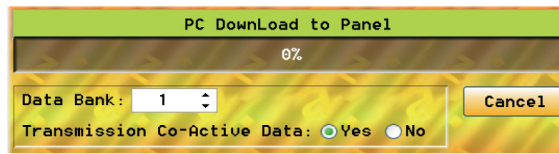
Click **PC Download to Panel** to enter the screen below.



COM Port: Choose the COM Port that matches your computer.  
 Baud Rate: Choose the Baud Rate that matches your modem.  
 Data Bank: Choose the Data Bank Number for downloading.  
 Data Bank No.1 : Loop 01 ~ 08. No.2 : Loop 09 ~ 16 .  
 No.3 : Loop 17 ~ 24. No.4 : Loop 25 ~ 32.



Press **DownLoad** to proceed.

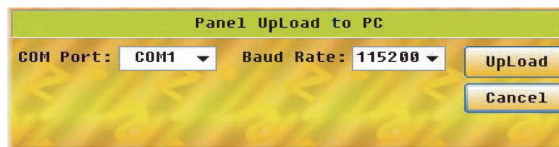


◎ **Panel Upload to PC:** Upload the data from panel to PC

Note: Make sure the PC and control panel are in turned on.

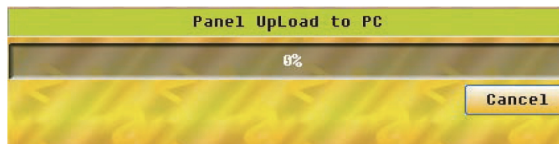
1. Set the PC

Click **Panel UpLoad to PC** to enter the screen below.



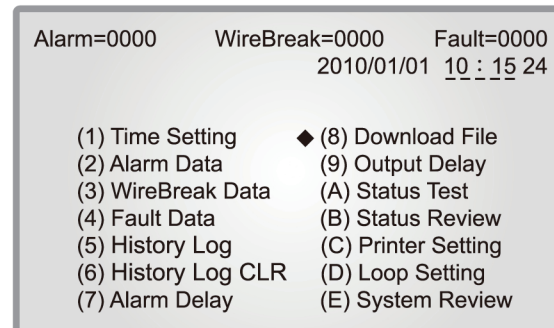
COM Port: Choose the COM Port that matches your computer.  
Baud Rate: Choose the Baud Rate that matches your moden.

Set up the details and press **UpLoad** to proceed.



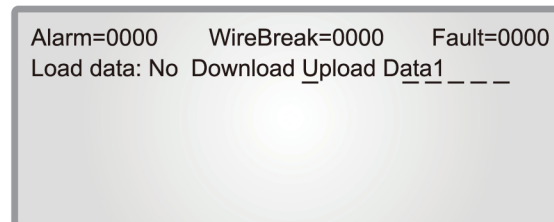
2. Set the panel

Immediately, enter the Function Selection List Screen.



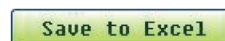
Choose (8) and then press ENTER to enter the screen below.

Choose "Upload" at the Load data: prompt by moving the cursor to the right, and selecting the Data Bank Number. The screen will display "Loading".



Note: Be sure to set the PC and Panel in correct order when downloading and uploading data.

Note: This program supports Excel format. Use



and



to save and load the data.



QA16 Addressable System

---

HORING LIH INDUSTRIAL CO., LTD.