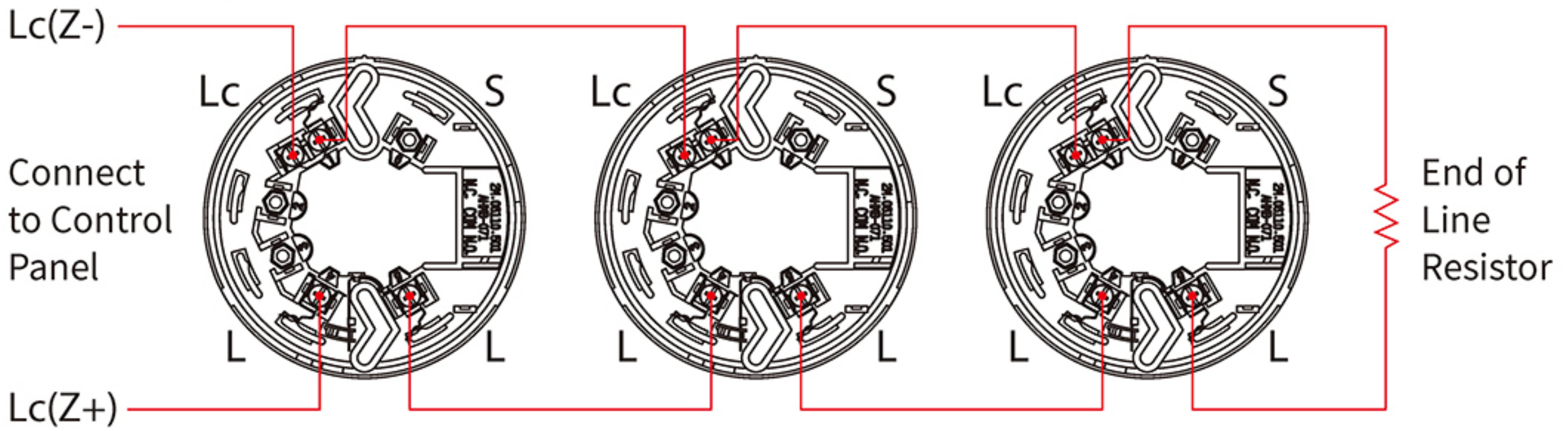


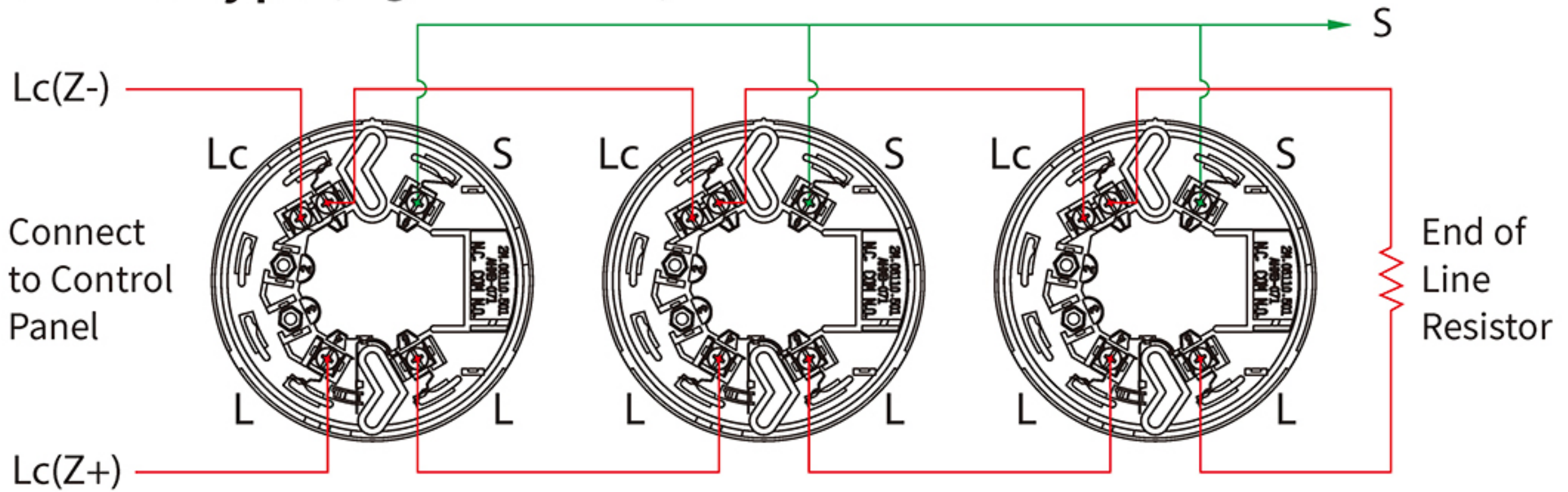
Mounting Base Wiring

Model	Feature, Application
AHMB-071-2	2-wire Apply to fire alarm control panel
AHMB-071-3	3-wire Auxiliary for remote indicating lamp
AHMB-071-4	4-wire 12 ~ 24VDC, optional one set of relay output. Apply to security system...etc.
06MB	Implanted-Type Applies to 2-wire, 3-wire, 4-wire.

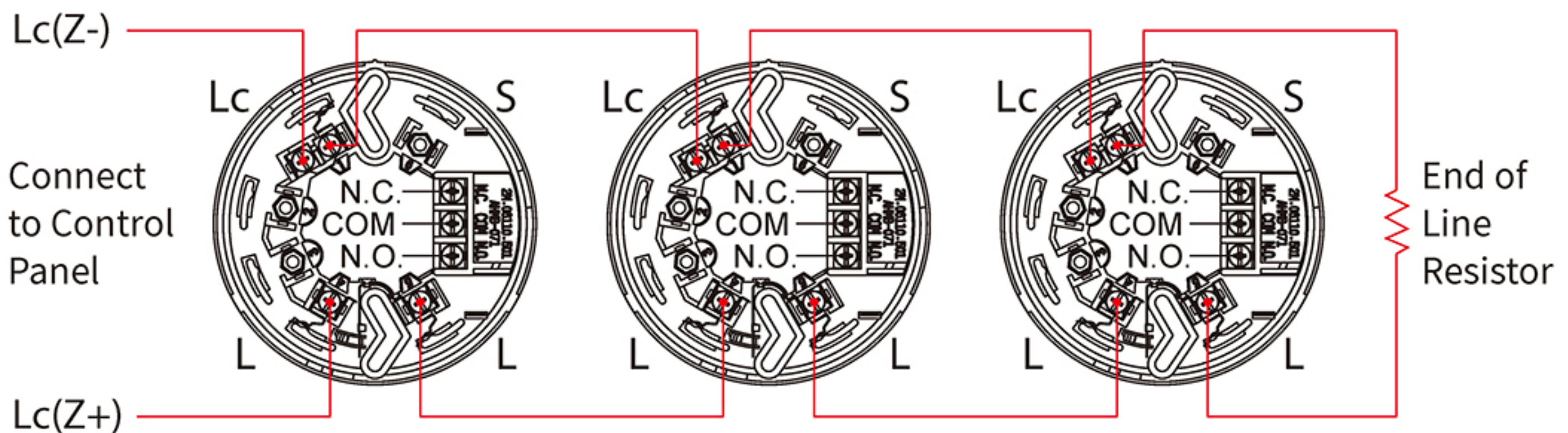
2-Wire Type (Regular)



3-Wire Type (Signal Transfer)



4-Wire Type (Relay Output) Contact Ratings 0.8A @30V DC 0.4A@125V AC



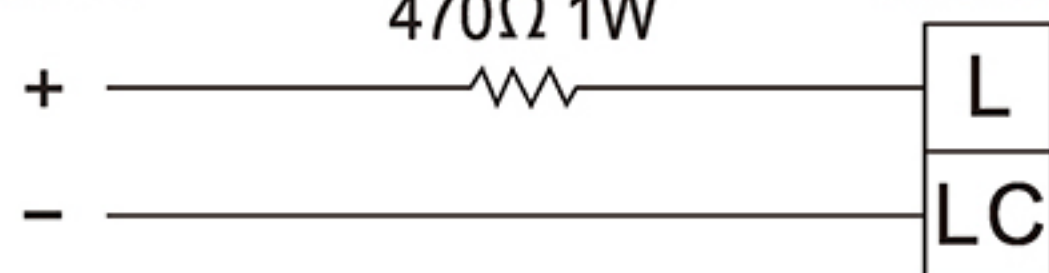
Fire Alarm
Control Panel



Detector



DC 24V



Detector

