

AHMB-031

Multi-Purpose Mounting Base



Design Characteristics

- The detector base is designed for use on all AH-031 series fire detection devices. It has a built-in shorting spring for use when the detector head is removed, which will prevent an open circuit fault condition at control panel during maintenance.
- Applies to model nos. AH-0311, AH-0315, and AH-0316.

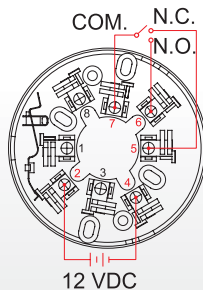


GB-031-S
Height: 27mm

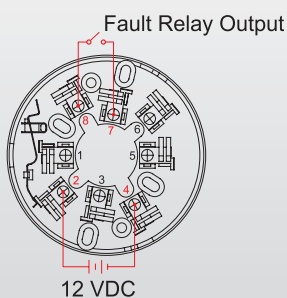
GB-031-T
Height: 34mm

Resettable

Alarm Output :
Normal Status
5 & 7 short circuit
6 & 7 open circuit
Alarm Status
6 & 7 short circuit
5 & 7 open circuit

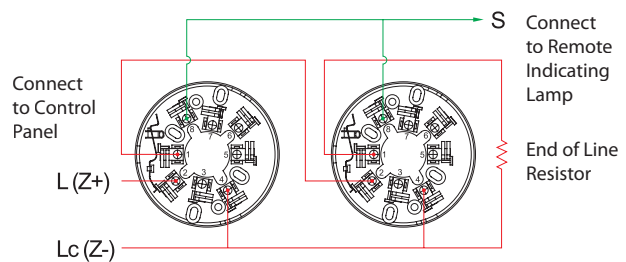


Disconnection or
Power-off Warning :
Normal Status
7 & 8 short circuit
Fault Status
7 & 8 open circuit



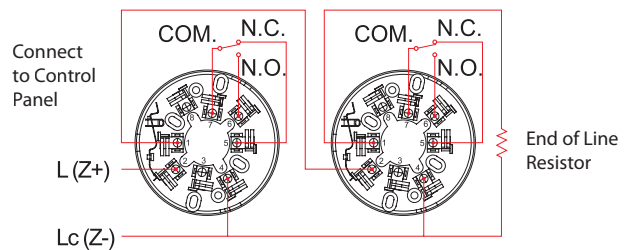
Contact Ratings
0.8A @ 30V DC
0.4A @ 125V AC

2, 3-Wire Type 3-Wire Type (see green line)



4-Wire Type (Relay Output)

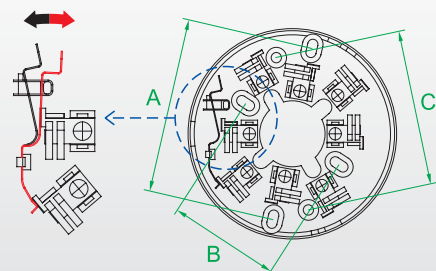
Contact Ratings 0.8A @30V DC 0.4A @125V AC



Diagram

Black : Nomal
Red : Close Circuit

A : 81~89mm
B : 50~59mm
C : 75.5mm



Approvals: EN54  